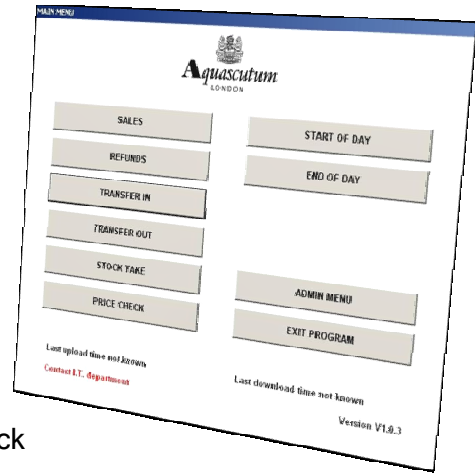


Concession System

Overview

Getting accurate stock and sales information is always difficult within a concession environment. You are reliant on the host store for sales information, which can often be expensive and not available when you want it. Other retail functions like stock take, goods in, transfers in/out, price checking, markdown and reporting are almost impossible without installing a back office PC or finding the counter space to install a till. Providing a facility for staff to have access to these facilities on the shop floor means they no longer need to leave the sales area and miss a potential sale.

The concession system from BancTec automates all areas of the shop floor and back of store operations enabling your own staff to record sales data on mobile devices, thus eliminating EDI from the host store. Accurate stock information is the lifeblood of the retail trade. With greater confidence in the stock data you can respond more effectively with replenishment and stock transfers.



The application is available either on an XP based tablet device or a EDA (CE or Windows Mobile) handheld mobile unit, these have a small footprint so can easily be situated on the counter. Either device provides the user with same capture functionality, freeing up staff time for sales and customer service instead of labour intensive paper work. Staff have instant access to daily, weekly and monthly sales reports, which can all be printed on bluetooth mobile printers.

Key benefits of the solution.

- Record sales and refund data
- Stock movements are recorded, giving you more accurate stock data.
- Stock taking functionality speeds up stock taking process.
- Price check and markdown with option to reprint labels.
- 'Z' Style till reports can be printed on mobile printers
- Automatic application updates.
- Staff spend more time on sales floor
- Connect to your company intranet to order stock, check price book and access company product list / reports etc.
- Data is available when you want it, you are not reliant on the host store.
- Increased accuracy of data, productivity and a reduction paper work.

Platform differences

- Tablet has a larger screen making on-line product books and intranet simpler to view.
- CE or Windows Mobile device has built in barcode scanner



Key functions

Sales

Capture daily sales recording data for stock management and replenishment. The data is captured by scanning the swing ticket and is associated with the relevant salesperson.

Options to search for an item or to alter the price by a % or £ for complete flexibility.

User: PETER N SOUTHGATE
KEY PRICE / ENT-OK
Code:
Barcode: 5035918307373
Style: AA9M60816219-1L
Product: BRUEFCASE5
Colour: 040
Size: 42
Price: £325.00
Buttons: Code OK, Change Price, Disc %, Disc £, Cancel

User: PETER N SOUTHGATE
KEY PRICE / ENT-OK
Code:
Barcode: 5035918311675
Style: ASMAZ087988-1
Product: TRES
Colour: 006
Size: 040L
Price: £145.00
Buttons: Disc %, Disc £, Code OK, Cancel, Change Price

Refunds

Similar functionality to the sales option except the user will be required to select a return reason code for each item.

Transfers In

Stock from suppliers, distribution or other concessions (IBT) is recorded using this function.

As part of the start of day communications update the device will receive a list of all the expected transfers. When receiving a delivery the user scans the transfer number on the delivery note or the delivery can be selected from the on-screen list. Each item is then scanned and any discrepancy is flagged to the user.

Scan/Key Transaction No
Code:
Choose Transfer to be processed:
Table with 3 columns: Barcode, Date, Description
Buttons: Menu, Select Transfer

Destination: 019 - ARMY & NAVY CHICHESTER
Quantity: 8
SCAN / KEY BARCODE
Code:
Barcode: 5035918302491
Style: AA9M31817931-9
Product: LSR W/SH15
Colour: 980
Size: XLG
Buttons: End Transfer, Cancel Last, Menu, Product Search

Transfers Out

Returning stock to head office or transferring stock to another concession is recorded with the function. The user will select the return destination from a list of suppliers, distribution and other concessions (IBT).

The quantity to be transferred is entered then each item scanned. A delivery note is printed to include the transfer number barcode for ease of scanning at the destination.

Stock Take

Improves stock accuracy and identifies stock loss quickly and accurately. There are two modules, Annual Stock Count for a whole store stock check and PI Count for stock counting of discrete departments or product ranges to maintain accurate stock levels. The system uses the on-board stock levels to produce instant discrepancy reports.

SCAN / KEY BARCODE

Code: [input field]

Barcode: 5035918288993

Style: AA9MD1607964-1

Product: SUITS

Colour: 990

Size: 38

Price A: £295.00 Price B: £295.00

Buttons: Menu, Product Search, Print A, Print B

Price Check / Markdown

Check the accuracy of displayed prices or re-label items where the original barcode is missing or damaged.

The price markdown feature gives you the functionality to adjust prices by scanning a product and printing a new price label on the mobile printer.

Aquascutum LONDON

Loc: 118

Loc Key: 15

SCAN / KEY BARCODE

Code: [input field]

City: [input field]

Barcode: 945518712223

Style: AS9ADW7953-1

Product: TIES

Colour: 018

Size: SINGLE

Buttons: Menu, End Location, Product Search, Cancel Last

Reports

The system stores upto 30 days worth of transaction data on the device. The user can select a variety of product and style based “z” style till reports for a particular day or date range. These can be printed to the mobile printer or exported to a file for sending to head office.

Automatic Application Updates

During the start of day communications the application receives any system updates.

Labels

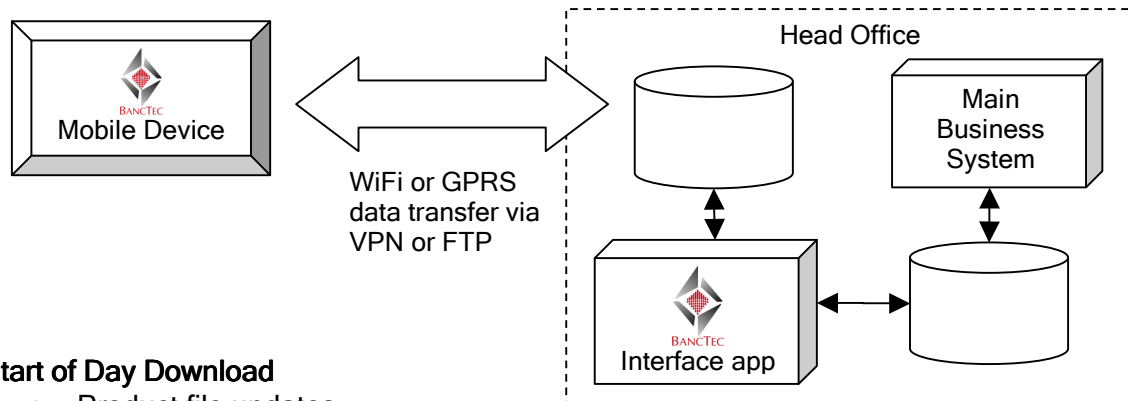
Use the mobile printers to print or reprint product labels, staff reason codes or discount code labels.

Communications Overview

The in-store device connects to head office via the 3G (GPRS) data network or via WiFi network if available within the host store.

Data transfer is achieved using shared drives on the head office via a secure VPN connection or standard FTP transfers.

The interface application is the middle ware providing the interface between the mobile device and your existing system. Data from the mobile device is uploaded, reformatted and stored ready for processing during the main systems overnight run. Likewise any data produced from this run is reformatted and stored ready for downloading to the mobile device.



Start of Day Download

- Product file updates
- Expected transfers (from distribution and IBT)
- Sales alteration reason codes (used when altering a sale price)
- Refund reason codes (used when returning an item)
- Store lookup (a list of all concession and distribution locations)
- Employ list for this concession (used to record the user)

End of Day Upload

- Transaction data; Sales & Refunds
- Transfers; Confirmation of deliveries and details or transfers on their way back to head office or to another concession (IBT)
- Alteration reason codes (used when altering a sale price)

Why Choose BancTec?

- BancTec has over 15 years experience delivering scalable and affordable auto ID solutions to the Retail Sector. Customers include Alfred Dunhill, Aquascutum, Next, Monsoon, The Officers Club, Paul Smith and Edinburgh Woollen Mill.
- BancTec is a global systems integration, business processing outsourcing and services organisation with over 250 people based in the UK providing technical support, project management, software development and post sales resources.
- We are hardware manufacturer independent and are therefore able to recommend the most appropriate hardware platform for your application.
- Aftercare service and support is important and at BancTec we able to offer a range of services to support your application and the installed hardware and our UK Call Centre is staffed 24/7.